

Manage your circuits from anywhere with **Indication Auxiliaries**



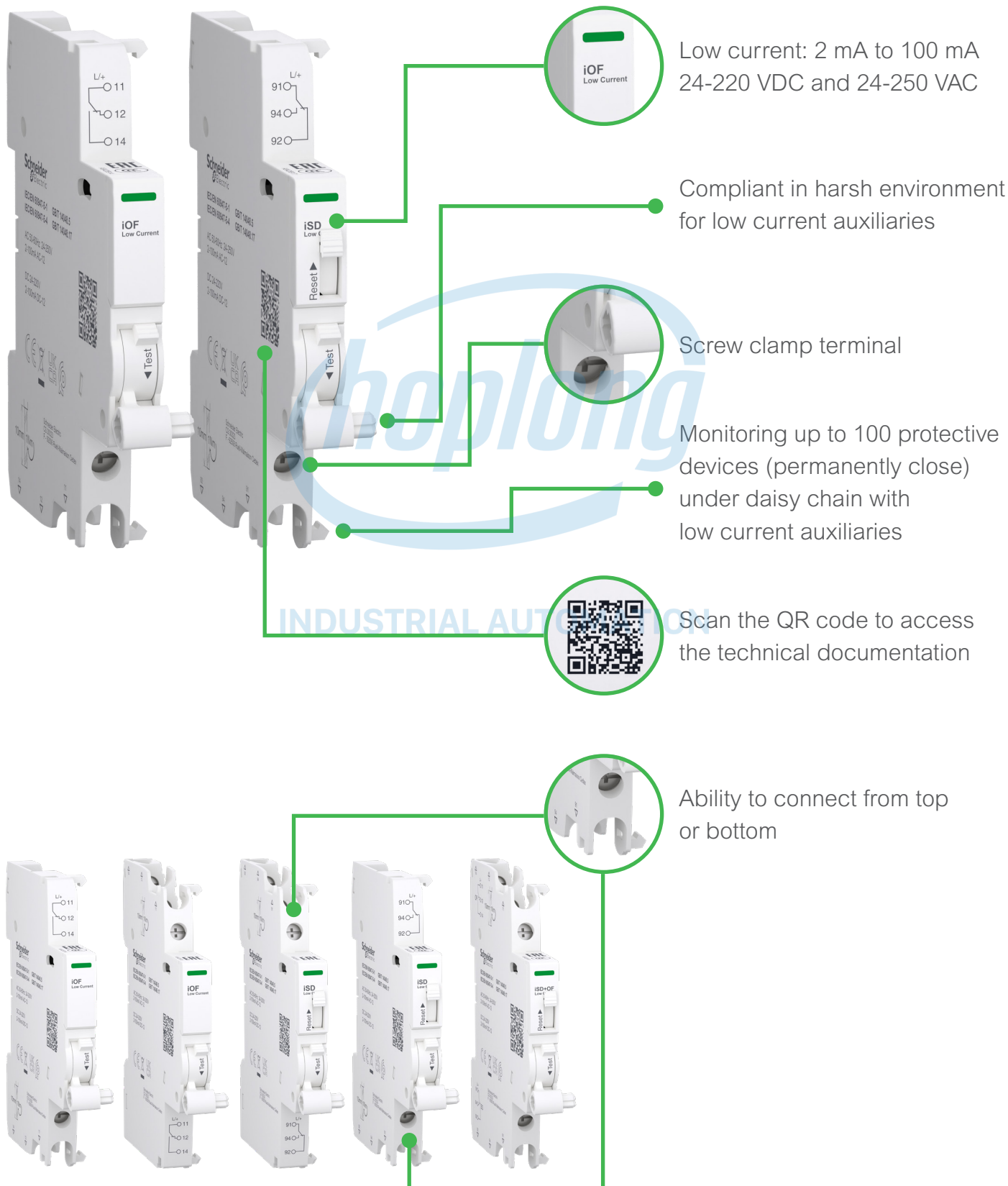
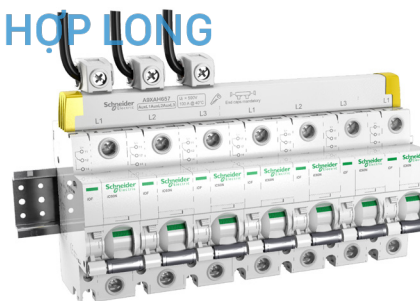
Indication Auxiliaries for Acti9 **NEW**

For basic and advanced applications



Simplify electrical maintenance

Auxiliaries give you better monitoring of your circuits. They provide the status of a Acti9 miniature circuit breaker, using a low current version within a PLC network or a basic version when the current ≥ 100 mA.



How to choose the right auxiliary for your projects

Follow the steps

- 1 **Your Current**
 - 2 mA to 100 mA
 - 100 mA to 6A
- 2 **Your Range**
 - Acti9 iC60/iC40
 - Acti9 C120/C60H-DC
- 3 **Type of auxiliary**
 - iOF
 - iSD
 - iSD+OF
 - iOF
 - SD
 - OF/SD+OF
- 4 **Position of the connection**
 - Top wiring
 - Bottom wiring
 - Top/bottom wiring
- 5 **Finally, choose your suitable product from the list below**

Current: 2 mA to 100 mA

NEW

In Acti9 iC60/iC40 range:

iOF	bottom wiring	A9A26914
	top wiring	A9A26915
iSD	bottom wiring	A9A26917
	top wiring	A9A26916
iSD+OF		A9A26919

In Acti9 C120/C60H-DC range:

OF	bottom wiring	A9N26914
SD	bottom wiring	A9N26917
OF/SD+OF		A9N26914 +A9N26917

Current: 100 mA to 6A

NEW

In Acti9 iC60/iC40 range:

iOF	bottom wiring	A9A26904
	top wiring	A9A26905
iSD	bottom wiring	A9A26907
	top wiring	A9A26906
iSD+OF		A9A26909

In Acti9 C120/C60H-DC range:

iOF	bottom wiring	A9N26904
SD	bottom wiring	A9N26907
OF/SD+OF		A9N26909

Refer the product images on the next page

The range of auxiliaries for your project?

Current: 2 mA to 100 mA

In Acti9 iC60/iC40 range:



A9A26914 A9A26915 A9A26916 A9A26917 A9A26919

In Acti9 C120/C60H-DC range:



A9N26914 A9N26917

Current: 100 mA to 6A

In Acti9 iC60/iC40 range:



A9A26904 A9A26905 A9A26906 A9A26907 A9A26909

In Acti9 C120/C60H-DC range:



A9N26904 A9N26907 A9N26909

Easy integration of low current auxiliaries with

- PLC network (when I/O module need a current < 100 mA)
- EcoStruxure™ solutions for Building, Power, and Plant & Machines

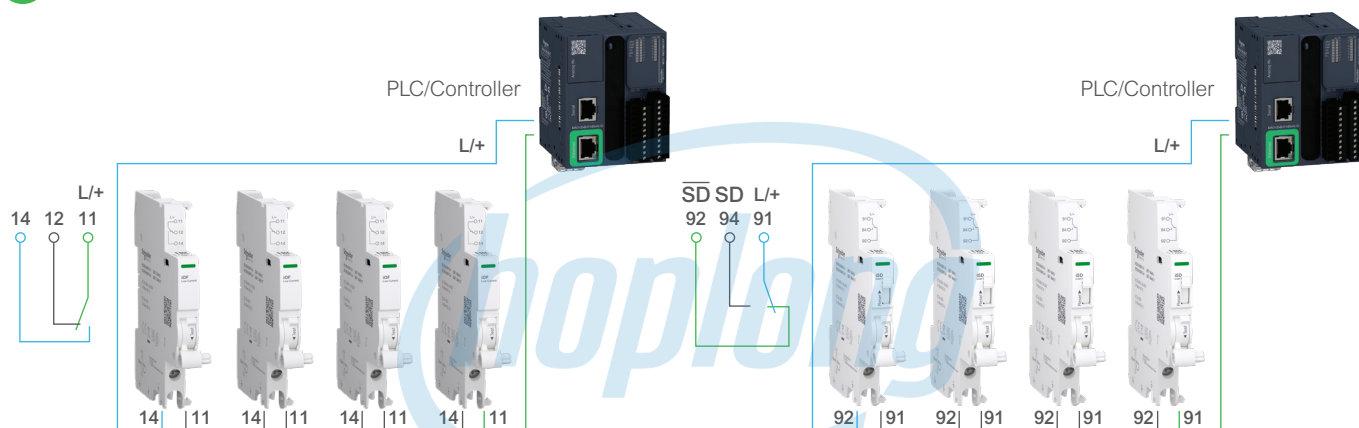
Map your circuit breaks instantly

When used with Acti9, our low current auxiliaries save time and give you peace of mind. Spot the problem immediately whenever there is a break in the circuit in your critical and industrial buildings, data centers and infrastructure.

Low current auxiliaries in daisy chain

Optimize your wiring (less wires and wiring time) inside a panel with the daisy chain architecture.

- 1 100 auxiliaries (OF only or SD only) are connected in series to form a daisy chain



OF model

Open/Close auxiliary contact

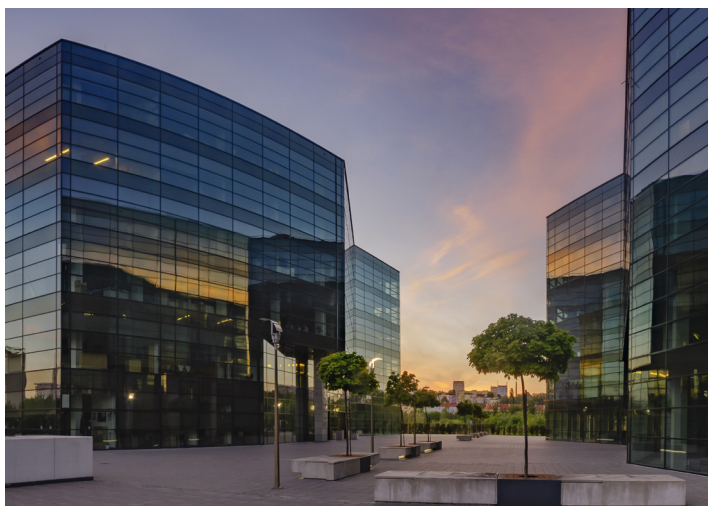
- Changeover contact indicates “open” or “closed” position of the device
- Remote indication of the position of the associated device

SD model

Fault indicating contact

- Changeover contact indicates the position of the device upon:
 - Electrical fault
 - Action on tripping auxiliary
- Remote indication of tripping upon a fault of the associated device

- 2 Any SD or OF signal opens the daisy chain
- 3 Once detected, status information is immediately reported to PLC or a Controller





INDUSTRIAL AUTOMATION

www.se.com

Schneider Electric Industries SAS

35, rue Joseph Monier
CS 30323
92506 Rueil Malmaison Cedex
France

RCS Nanterre 954 503 439
Capital social 896 313 776 €
www.se.com

998-22104668_LCAA9_GMA_brochure.pdf