

# APC Smart-UPS C<sup>TM</sup>

Efficient, true sine-wave power protection for entry-level servers and network equipment.



Brings the reliability of the world's most popular network and server UPS to entry level applications.

The most affordable true sine-wave UPS's in the Smart-UPS family. Designed for entry level servers, it is compatible with today's active power factor corrected (PFC) power supplies. Included PowerChute Business Edition software is compatible with all major server operating systems and provides UPS management and safe system shutdown.

- **Reliable**
- **Economical**
- **Efficient**
- **Manageable**



# APC Smart-UPS C

Application optimized models ideal for entry-level servers, point of sale and other small network devices.

Tower and Rackmount 2U  
1000,1500, 2000 and 3000VA



## Standard features:

1

### LCD Display

Intuitive interface provides comprehensive status information at a glance.

### High Efficiency Green Mode

Saves utility costs and reduces heat promoting longer component life.

### Pure Sine-Wave Output

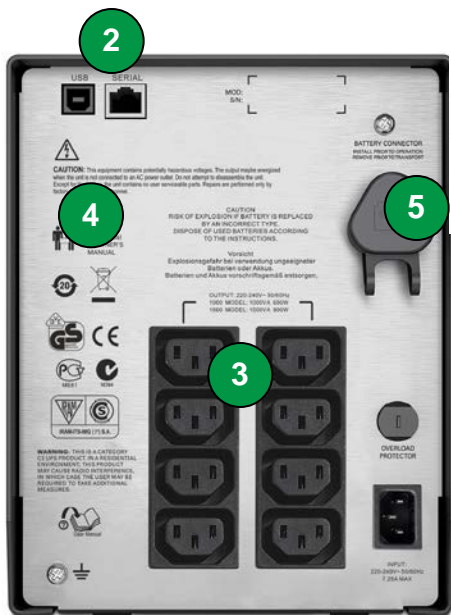
Simulates the utility when on battery for optimum device compatibility.

### Network Grade Power Conditioning

Automated voltage regulation, noise filtering and surge protection.

### Advanced battery management

Temperature compensated charging extends life of internal batteries.



2

### Communication Ports

USB and serial ports for UPS management.

3

**Generous number of outlets** All receptacles are surge and UPS output protected.

4

### Safety-agency approved

Ensures the product has been tested and approved to national standards.

5

### Battery disconnect

Convenient way to disconnect battery for transport (tower models).

**APC**  
by Schneider Electric

# APC Smart-UPS C Display

Comprehensive LCD interface for status at a glance.

Interface on all SMC models.



1

## LCD Display Screen

Comprehensive status at a glance

### Status Conditions

- On line
- On battery
- Green mode
- Load graph
- Battery charge graph
- Audible Alarm

### Measures

- Input & Output Voltage
- Load viewable in Watts, VA or %
- Output current and frequency
- Event counter
- Estimated on battery runtime

2

## On Line/On Battery

LED illuminates Green when UPS in on utility power, or will illuminate Orange when providing battery power.

3

## On/Off button

4

## System Fault LED

Illuminates in the event of a system fault and displays error message.

5

## Mute Button

Used to silent the alarms

6

## Display Button

Steps through each measurement screen and provides the ability choose the default view.

## Tower models



Product feature	SMC1000I	SMC1500I
Output		
Power Capacity	600W/1000VA	900W/1500VA
Nominal Output Voltage	230V	
Output Frequency	47-63Hz	
Wave Form Type	Sine wave	
Output Connections	(8) IEC 320 C13	
Input		
Nominal Input Voltage	230V	
Input Voltage Range for main operations (Max adjustable range)	180-287V (170-300V)	
Input Frequency	50/60 Hz +/-3 Hz (auto sensing)	
Input Connection	IEC 320 C14	
Batteries and Runtime		
Battery Type	Maintenance-free sealed lead-acid battery with suspended electrolyte, leak proof	
Typical Backup Time at 1/2 Load (min)	14 min	11 min
Typical Backup Time at full Load (min)	5.Min	4 min
Replacement Battery	APCRBC142	RBC6
Communication and Management		
Interface Ports	USB and Serial (RJ45)	
Control Panel and audible alarms	Etched glass LCD display with LED status indicators; alarm on battery, distinctive low battery alarm	
Surge Protection and Filtering		
Surge Energy Rating	455J	
Filtering	Full time multi-pole noise filtering: 0.3% IEEE surge let-through, zero clamping response time	
Physical		
Maximum Height	215 mm (8.62 in)	215 mm (8.62 in)
Maximum Width	171 mm (6.73 in)	171 mm (6.73 in)
Maximum Depth	439 mm (17.28 in)	439 mm (17.28 in)
Net Weight	17.27 kg (38 lbs)	20.45 kg (45 lbs)
Conformance		
Regulatory	VDE, CE, GOST, C-Tick	
Warranty and Equipment Protection Policy	2 years repair or replace	

## Tower models



Product feature	SMC2000I	SMC3000I
Output		
Power Capacity	1300W/2000VA	2100W/3000VA
Nominal Output Voltage	230V	
Output Frequency	47-63Hz	
Wave Form Type	Sine wave	
Output Connections	(6) IEC 320 C13, (1) C19	(8) IEC 320 C13, (1) C19
Input		
Nominal Input Voltage	230V	
Input Voltage Range for main operations (Max adjustable range)	180-287V (170-300V)	
Input Frequency	50/60 Hz +/-3 Hz (auto sensing)	
Input Connection	IEC 320 C14	
Batteries and Runtime		
Battery Type	Maintenance-free sealed lead-acid battery with suspended electrolyte, leak proof	
Typical Backup Time at 1/2 Load (min)	17 min	11 min
Typical Backup Time at full Load (min)	6.5 Min	3.5 min
Replacement Battery	APCRBC148	APCRBC150
Communication and Management		
Interface Ports	USB and Serial (RJ45)	
Control Panel and audible alarms	Etched glass LCD display with LED status indicators; alarm on battery, distinctive low battery alarm	
Surge Protection and Filtering		
Surge Energy Rating	730 J	724 J
Filtering	Full time multi-pole noise filtering: 0.3% IEEE surge let-through, zero clamping response time	
Physical		
Maximum Height	216 mm (8.50 in)	435 mm (17.13 in)
Maximum Width	170 mm (6.69 in)	197 mm (7.76 in)
Maximum Depth	440 mm (17.32 in)	544 mm (21.42 in)
Net Weight	27.50 kg (61 lbs)	43 kg (95 lbs)
Conformance		
Regulatory	VDE-GS, CE, EAC, C-Tick, IRAM, SABS	
Warranty and Equipment Protection Policy	2 years repair or replace	

## Rackmount models



Product feature	SMC1000I-2U	SMC1500I-2U
Output		
Power Capacity	600W/1000VA	900W/1500VA
Nominal Output Voltage	230V	
Output Frequency	47-63Hz	
Wave Form Type	Sine wave	
Output Connections	(4) IEC 320 C13	
Input		
Nominal Input Voltage	230V	
Input Voltage Range for main operations (Max adjustable range)	180-287V (170-300V)	
Input Frequency	50/60 Hz +/-3 Hz (auto sensing)	
Input Connection	IEC 320 C14	
Batteries and Runtime		
Battery Type	Maintenance-free sealed lead-acid battery with suspended electrolyte, leak proof	
Typical Backup Time at 1/2 Load (min)	14 min	18 min
Typical Backup Time at full Load (min)	5 min	6 min
Replacement Battery	APCRBC124	APCRBC132
Communication and Management		
Interface Ports	USB, Serial (RJ45)	
Control Panel and audible alarms	Etched glass LCD display with LED status indicators; alarm on battery, distinctive low battery alarm	
Surge Protection and Filtering		
Surge Energy Rating	455J	455 J
Filtering	Full time multi-pole noise filtering: 0.3% IEEE surge let-through, zero clamping response time, meets UL1449	
Physical		
Maximum Height (in)	89 mm (3.5 in)	89 mm (3.5 in)
Maximum Width (in)	432 mm (17.0 in)	432 mm (17.0 in)
Maximum Depth (in)	406 mm (16.0 in)	475 mm (18.7 in)
Net Weight	20.52 kg (45.15 lbs)	27.82 kg (61.2 lbs)
Conformance		
Regulatory	VDE, CE, GOST, C-Tick	
Warranty and Equipment Protection Policy	2 years repair or replace	

## Rackmount models



Product feature	SMC2000I-2U	SMC3000RMI2U
Output		
Power Capacity	1300W/2000VA	2100W/3000VA
Nominal Output Voltage	230V	
Output Frequency	47-63Hz	
Wave Form Type	Sine wave	
Output Connections	(6) IEC 320 C13	(8) IEC 320 C13, (1)IEC 320 C19
Input		
Nominal Input Voltage	230V	
Input Voltage Range for main operations (Max adjustable range)	180-287V (170-300V)	
Input Frequency	50/60 Hz +/-3 Hz (auto sensing)	
Input Connection	IEC 320 C14	
Batteries and Runtime		
Battery Type	Maintenance-free sealed lead-acid battery with suspended electrolyte, leak proof	
Typical Backup Time at 1/2 Load (min)	9 min	9 min
Typical Backup Time at full Load (min)	3 min	3 min
Replacement Battery	APCRBC133	APCRBC151
Communication and Management		
Interface Ports	USB, Serial (RJ45)	
Control Panel and audible alarms	Etched glass LCD display with LED status indicators; alarm on battery, distinctive low battery alarm	
Surge Protection and Filtering		
Surge Energy Rating	730 J	724 J
Filtering	Full time multi-pole noise filtering: 0.3% IEEE surge let-through, zero clamping response time, meets UL1449	
Physical		
Maximum Height (in)	89 mm (3.50 in)	89 mm (3.50 in)
Maximum Width (in)	480 mm (18.90 in)	480 mm (18.90 in)
Maximum Depth (in)	470 mm (18.50 in)	670 mm (26.38 in)
Net Weight	30.16 kg (67 lbs)	27.82 kg (112 lbs)
Conformance		
Regulatory	VDE-GS, CE, EAC, C-Tick, IRAM, SABS	
Warranty and Equipment Protection Policy	2 years repair or replace	